

MANIPUR STATE POWER COMPANY LIMITED



ANNUAL ADMINISTRATIVE REPORT FY 2025-26



+91 385 2450050

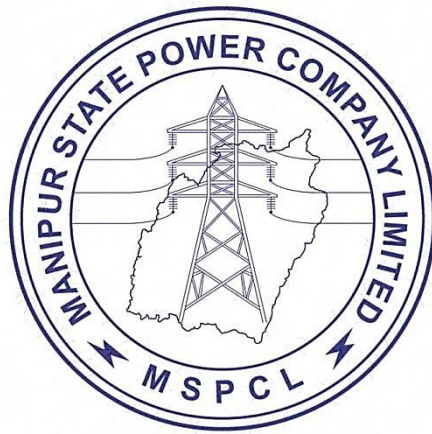


www.mspcl.in



**CORPORATE OFFICE:-
ELECTRICITY COMPLEX, KEISHAMPAT
JUNCTION,
IMPHAL-795001, MANIPUR**

MANIPUR STATE POWER COMPANY LIMITED (MSPCL)



ANNUAL ADMINISTRATIVE REPORT

FOR THE FY 2025-26

INDEX

1. Historical Background:	2
2. Organization:	3
2.1 Overview of MSPCL	4
2.2 Class wise number of approved sanctioned post and MIP of MSPCL for the year 2025-26:	5
2.3 Human Resource/Capacity Building programme during the year 2025-26:	5
3. Budget Provision	7
4. Power Supply and Load Management	7
4.1 Load Demand and Energy Consumption during the last 4 years	7
4.2 State Share from Central Sector Generating Stations and Availability of Power:	7
4.3 Requirement of power & energy	8
5. Transmission Infrastructure:	8
5.1 Inter-State transmission infrastructure:	8
5.2 Intra-State transmission infrastructure:	8
5.2.1 Installed Capacity of Sub-Station added during the year 2025-26:	9
6. Regulatory Commission & Transmission Tariff:	9
7. Generation:	10
7.1 Hydro Generation	10
7.1.1 Development of Small and Medium range Hydro Power Projects:	10
8. Achievement during the year 2025-26:	10
9. Ongoing works	10
9.1 132 kV Transmission System	10
9.2 33 kV Sub-Transmission System	11
10. Planned Sub-Transmission System Projects:	11
10.1 Revamped Distribution Sector Scheme (RDSS).	11
10.2 Under SASCI (Special Assistance to States for Capital Investment) Funding:	11
10.3 Under ADB (Asian Development Bank) Funding:	11
11. Power System Monitoring and Strengthening Schemes.	11
11.1 State Load Despatch Center (SLDC), Manipur	11
11.2 33 kV System Integration with SLDC Control Center.	13
11.3 Scheduling Accounting Metering and Settlement of Transaction (SAMAST)	13
11.4 Establishment of SOC and NOC at Manipur State Load Dispatch Center :	13
12. Cyber Security and Critical Infrastructure Protection	13
12.1 Critical Information Infrastructure (CII) Designation	13
12.2 Information Security Management System (ISO/IEC 27001:2022)	14
13. Leasing of Fiber Optic Network for commercial purpose.	14
14. Conclusion:	16
Appendix I – Organisational Chart	17
Appendix II - Details of 33/11 KV Sub-stations:	18
Appendix III - Details of 33 KV Lines:	18
Appendix IV - Details of 400 kV & 132 KV Lines	23
Appendix V - Details of 400/132 kV & 132/33 KV Sub-stations:	24
Appendix VI – Power Map	25

1. Historical Background:

The commissioning of the two micro hydel sets having capacities of 100 KW and 56 KW at Leimakhong in 1930 by the then Manipur State HE Board marked the beginning of the use of electricity in Manipur. The Royal palace and main areas of Imphal Town enjoyed Electricity generated from these captive hydel stations. During the World War-II, two more DG sets of 62 KW and 46 KW capacities were installed at the old Imphal Power House by the Armed Forces for electrification of Imphal town and its suburbs. The above installed capacity remained the same till the end of the first Five Year plan (1951-56) of the post-independence period. The second Five Year Plan (1956-61) however, saw a significant change in the demand of power in the state. The demand had been growing rapidly envisaging more social acceptance and the gradual promotion of awareness of the people towards the use of electricity for different purposes. This had necessitated further addition in the generation capacity and it was accomplished with the installation of a few more DG sets of various capacities in and around Imphal.

To evacuate the power generated from the captive micro hydel power station (100 + 56) KW at Leimakhong to specific load centres of Palace Compound and main bazaar area of Imphal, the 20 Km long, 11 KV line between Imphal & Leimakhong was constructed for the first time in Manipur in 1930. The state was then having 26 Kms. of 11 KV lines and 45 Kms. of domestic lines to serve very few consumers in 7 villages/Leikais. Both the line and generating stations were owned by the then Manipur State HE Board, constituted under the ex-officio Chairmanship of the Political Agent. Subsequently Electricity was kept under the administrative control of the Public Works Department, Government of Manipur. It was separated from state PWD and started functioning as an independent Department since February 1970.

The peak load demand of Manipur in 1971 was 3.6 MW only as the power supply is restricted to few select locations. The demand was met from the State's own generating stations and power purchased from the neighbouring states/Electricity Board at the low voltage. The per capita consumption of energy was 4.84 KWh. The demand was kept suppressed due to lack of generation till the year 1980. The scenario was abruptly changed after the purchase of bulk power from Assam with the commissioning of 132 kV inter-state transmission line from Imphal to Dimapur and 6.3 MVA, 132/33 KV sub-station at Yurembam in July 1981. The situation was further alleviated with the commissioning of Loktak Hydro Electric Project having a capacity of 3x35 MW on the **4th of August 1984**.

During the years from 1984 to 1996, a number of Central Sector Power Projects, mostly Hydel projects in the North Eastern Region were commissioned. Every project has a share of about 7% for Manipur. However, the state could not draw its allocated share of power from the Central Generating Stations due to its limited inter-state Available Transmission Capacity (ATC) of about 100 MW and the state suffered frequent load shedding.

With the commissioning of 400 kV Silchar to Imphal D/C Transmission Line (charged at 132kV) on 15th March 2015, the earlier transmission line constraint was eliminated and availability of additional power from newly commissioned Central Power Generating Units such as Pallatana, Bongaigaon and markets through power exchange, the state could meet its power requirement. At present the consumers are enjoying almost 24 h^or of power supply daily. Further with the charging of the Silchar-Imphal 400 kV D/C line at its rated voltage on 25th

December, 2018 and the Imphal–New Kohima –New Mariani 400kV D/C Line on 13th November 2020, the inter-state ATC has been enhanced to about 2000 MW which can easily meet the power requirement of the State for the next 10/15 years.

2. Organization:

In pursuance of Electricity Act, 2003, the State Electricity Department was unbundled and Corporatized into 2 (two) State owned functionally independent successor entities i.e. (i) Manipur State Power Company Limited (MSPCL) as the deemed transmission licensee and (ii) Manipur State Power Distribution Company Limited (MSPDCL) as the deemed distribution licensee respectively w.e.f. the 1st of February, 2014 (Saturday) by a Gazette Notification of the Government vide Manipur State Electricity Reforms Transfer Scheme, 2013 (or Transfer Scheme, 2013) dated the 31st of December, 2013. Manipur State Power Company Limited (MSPCL) undertakes the function of transmission of electricity and also discharges all functions of the State Transmission Utility and Generation. MSPCL acts as the Holding Company for the State Government's investments in the power sector and undertakes overall co-ordination and planning for the power sector in the State of Manipur. MSPCL is the authorized representative of the State Government for development of hydroelectric power potential in the State of Manipur and perform such other functions as may be entrusted to it by the State Government from time to time. In addition, as per Section 31(2) of the Electricity Act, 2003, Manipur State Power Company Limited (MSPCL) is operating the State Load Dispatch Centre (SLDC) until an independent Government company or any authority or corporation is notified by the State Government.

The executive/policy decisions of the Company are implemented by the Managing Director of the Company under the supervision and control of the Board of Directors headed by the Chairman of the Company.

The Constituents of the Board of Directors for Manipur State Power Company Limited (MSPCL) are as under:

- | | |
|---|------------------------------------|
| 1. Chief Secretary, Government of Manipur | - Non-Executive Chairman |
| 2. Administrative Secretary (Finance), Govt. of Manipur | - Director (on Ex- Officio Basis) |
| 3. Administrative Secretary (Plg), Govt. of Manipur | - Director (on Ex- Officio Basis) |
| 4. Administrative Secretary (Power), Govt. of Manipur | - Director (on Ex- Officio Basis) |
| 5. Managing Director, MSPCL | - Director |
| 6. Managing Director, MSPDCL | - Director |
| 7. Expert in Audit/legal/technical field | - Independent Director |
| 8. Expert in Audit/legal/technical field | - Independent Director |

MSPCL have its organization chart for various functionaries in the Company and pictographic representation is placed at **Appendix I**.

In the process of unbundling of the erstwhile Electricity Department Manipur (EDM) into two nos. of Companies –MSPCL and MSPDCL, all the assets and liabilities of the erstwhile EDM have been transferred to the successor entities. Jurisdiction/area of operation of MSPCL among others are:

- Transmission network of 33 KV and above
- All sub-stations of 33/11 KV and above
- All generation units other than those under the jurisdiction of MSPDCL
- State Load Dispatch Centre (SLDC). (Currently under MSPCL until Ring Fencing)

All Personnel of the erstwhile Electricity Department, Manipur are placed under deputation either with MSPCL or MSPDCL except for very few numbers of employees retained with the Office of the Administrative Officer (Power) or with the Office of Executive Engineer (MRT). The pay and allowances along with personnel entitlements of the employees/personnel of the erstwhile Electricity Department, Manipur is protected as per the terms and conditions laid down in the Transfer Scheme, 2013.

The retained Offices of Administrative Officer (Power) and Executive Engineer (MRT) are kept for smooth process of fund flow, looking into various aspects of employee related matters and creating an interface between the Government and the Company.

Under the Transfer Scheme, 2013, MSPCL shall be eligible for and shall continue to receive support from the State Government in the form of revenue support, equity support, capital subsidies, loans, interest subsidies and such other monetary and financial assistance, whether under a Central or State scheme or otherwise, as may be necessary for the due and effective performance of their functions until the time the Company achieve commercial viability on its own. The Company is to enter into a Memorandum of Understanding (MoU) with the State Government for release of such assistance for each financial year subject to fulfillment of Key Performance Indicator.

2.1 Overview of MSPCL

As mandated in the Transfer Scheme, MSPCL is involved in evacuation/transmission of power generated by generating stations in/outside the state that are connected to the State Transmission System, wheeling of power down to 33 kV voltage level to the entity engaged in distribution of electricity, facilitates exchange of power among entities and exchange of power through inter connection with Central Transmission Utility (CTU).

The STU shall also be responsible for coordinating, managing and servicing of the State Grid Code. It shall also discharge functions of planning and coordination relating to STU with due correlation with CTU, State Government Entities, North Eastern Regional Power Committee (NERPC), Central Electricity Authority (CEA), Joint Electricity Regulatory Commission (Mizoram & Manipur) and any other person/ organization notified by State Government. It shall ensure development of an efficient, coordinated and economical system of Intra-State Transmission lines for smooth flow of electricity from generating station to the load centre. The STU shall also be responsible for providing non-discriminatory Open Access to its transmission system subject to availability of adequate transmission corridor for use by any licensee or generating station or any Open Access Consumer on payment of requisite transmission charges, other charges, fees and surcharges as provided in different Regulations specified by the Regulatory Commission.

The STU shall work out the requirement of additional transmission system capacity after taking into account of the existing capacity, future requirement of evacuation from new generating projects inclusive of Captive Power Plants (CPPs), power generating projects under construction in the State, and share allocation of the state from Inter State Generating Stations (ISGS), Mega Power Projects etc. Any supply from generating stations of temporary nature shall not be considered. In addition, the power procurement plan of distribution licensee of the State pursuant to the Tariff Regulations and power to be wheeled by different Open Access Customers in Long Term Open Access as per Open Access Regulations shall also be taken into account for the purpose of overall planning. The STU shall also identify suitable locations of load centres for installation of suitable Sub-Stations.

2.2 Class wise number of approved sanctioned post and MIP of MSPCL for the year 2025-26:

The total sanctioned and existing strength of various posts in Manipur State Power Company Limited (MSPCL) during the period under report is given below.

Sanctioned post & Man-in-Position of Manipur State Power company Limited for FY 2025-26				
Group	No. of sanctioned post	Man-in-position status of MSPCL		
		Company recruited employees	Deputation from Electricity Dept.	Total
Group A	171	73	16	89
Group B	312	177	9	186
Group C	624	213	112	325
Group D	1337	671	37	708
Total	2444	1134	174	1308

2.3 Human Resource/Capacity Building programme during the year 2025-26:

For capacity building and skill development, MSPCL has sent some of its staff to various training/certification programmes. The details of training/certification programmes attended by the staff are given below:

Sl. No	Details of Training	Organized by	Venue	Duration		No. participants
				From	To	
1.	Workshop cum Training Programme on Government e-Marketplace	Government of India	Sangai Hall, Hotel Imphal	16/04/2025	17/04/2025	2
2.	89 th batch State Accounts training	State Academy of Training	Takyelpat, Manipur	21/04/2025	21/07/2025	2
3.	Training Programme on RTI	Department of Personnel & Training, New Delhi	Takyepat, Manipur	08/05/2025		1
4.	Middle Management Programme	Power Grid Corporation of India Limited	IIM, Calcutta	16/06/2025	18/06/2025	5
5.	Capacity Building Workshop on "STELLAR"	Central Electricity Authority	CEA, Sewa Bhawan, New Delhi	11/09/2025	12/09/2025	3
6.	Digital Infrastructure Public	Digital India Corporation	Gangtok, Sikkim	13/10/2025	14/10/2025	4
7.	90 th batch State Accounts training	State Academy of Training	Takyelpat, Manipur	27/10/2025 (3 months)		1

8.	3 days Training Programme on Tender and Procurement through GEM	State Academy of Training	Takyelpat, Manipur	03/11/2025	05/11/2025	11
9.	3 days Training Programme on IT & Digital Literacy	State Academy of Training	Takyelpat, Manipur	03/11/2025	05/11/2025	8
10.	3 days Training Programme on DDOs	State Academy of Training	Takyelpat, Manipur	12/11/2025	14/11/2025	6
11	3 months Re-Skilling/Re-Training for Electricians	NPTI-NER	NPTI-NER Guwahati, Assam	10/11/2025	30/11/2026	2
12.	One Week Capacity Building Program on “Switchgear and Relay Operation & Maintenance”	NPTI-NER	NIELIT, Imphal	05/01/2026	09/01/2026	50
13.	One-Day Workshop on “Transformational Leadership in Power Sector”	Power Grid Corporation of India Limited	IIM, Calcutta	10/02/2026		2
14.	One Week Capacity Building Program on “Regulatory Framework in Power Sector and Measures Relating to Safety & Electrical Supply as per CEA Regulation”	NPTI-NER	NIELIT, Imphal	16/02/2026	20/02/2026	26
15.	One Week Capacity Building Program on “Operation & Maintenance and Loss Reduction in Distribution System”	NPTI-NER	NIELIT, Imphal	23/02/2026	27/02/2026	28
16.	Capacity Building Workshop on formulating Power and Civil Depot Infrastructure Proposals under PM-eBus Sewa Scheme	Ministry of Housing and Urban Affairs (Urban Transport-I Desk)	Sankalp Shawan, MoHUA, New Delhi	19/02/2026	20/02/2026	2

3. Budget Provision

(₹ in Lakhs)

Major Head Sub Major Head-98 Sub Head Detailed Head	Budget Estimate for the year 2025-26	Actual from April 2025 Feb 2026	Anticipated for March, 26	Total Revised Estimate (Proposed) For FY 2025-26
4801/05/190/01/01/54/Investment	2000.00	1140.26	11401.89	12542.15

MSPCL has only one long term System user i.e. MSPDCL. Therefore, the entire Aggregate Revenue Requirement (ARR) approved by Manipur Electricity Regulatory Commission (MnERC) is required to be recovered from MSPDCL. Hence, the approved ARR amount of ₹ 90.06 Cr for FY 2025-26 and proposed amount of ₹ 123.70 Cr for FY 2026-27 is included under MH:2801Power/80/001/04/01/33 - Subsidies operated by MSPDCL.

4. Power Supply and Load Management

4.1 Load Demand and Energy Consumption during the last 4 years

Particular	2021-22	2022-23	2023-24	2024-25	2025-26
Peak Load met (MW)	253.85	251.3	248.2	259.84	272.2*
Energy Requirement met (MU)	1017.87	1010.71	990.40	1069.43	1177.36

*Upto the month of February, 2026
Source: SLDC, Manipur

4.2 State Share from Central Sector Generating Stations and Availability of Power:

The generations of all the Central Sector Power Projects of North Eastern Region are shared among the N.E. States as per the allocation made by the Government of India leaving 15% as unallocated share. The share of Manipur for power drawal from the Central Sector Generating Stations of this region is as given below.

Generation Stations	Installed Capacity (MW)	Allocated Power		Unallocated Power		Total Share of Manipur (in MW)
		% Allocation	State's Share (in MW)	% Allocation	State's Share (in MW)	
Loktak HPS	105	28.95	30.40	1.16	1.22	31.62
Khandong HPS	50	5.34	2.67	1.23	0.62	3.29
Kopili HEP	200	6.17	12.34	1.23	2.45	14.79
Kopili HEP Stg. - II	25	5.72	1.43	1.23	0.31	1.74
AGBPP	291	6.87	19.99	1.12	3.26	23.25
Agartala GTP-CC	130	7.04	9.15	1.18	1.53	10.69
Bongaigaon Thermal PP	750	6.28	47.10	1.23	9.19	56.29
Doyang HPS	75	6.67	5.00	1.20	0.90	5.90
Ranganadi HPS	405	7.16	29.00	1.21	4.90	33.89
Pallatana GPP	726	7.16	51.98	0.00	0.00	51.98
Pare HEP	110	7.13	7.84	1.23	1.35	9.19
SUBANSIRI--LOWER	2000	2.17	43.38	0.00	0.00	43.38
Punatsangchhu II (Cross Border)	1020	0.56	5.71	0.00	0.00	5.71
TOTAL	5887		266.00		25.71	291.71

Source: SLDC Manipur

The total share shown above is based on the total installed capacities of the projects.

4.3 Requirement of power & energy:

The requirement of power for the state for all categories of consumers has been gradually increasing year after year. Taking all sources of growth in the demand into account, the **20th Electric Power Survey of India** under the aegis of Central Electricity Authority (CEA) had forecasted the demand of the state for the next few years and the projected power requirement of the state is as below:

Particular	2025-26	2026-27	2027-28	2028-29	2029-30
Peak Load (MW)	325	344	363	383	404
Energy Requirement (MU)	1289	1363	1441	1522	1610

5. Transmission Infrastructure:

5.1 Inter-State transmission infrastructure:

At present the bulk of the power requirement of the State is drawn from outside the State through the inter-State transmission lines. The existing inter-State transmission lines are (i) 132kV Loktak HEP to Ningthoukhong S/C line (ii) 132kV Imphal to Kohima via Karong S/C line (iii) 132kV Imphal to Dimapur D/C line (iv) 132 kV Leimatak-Rengpang-Jiribam S/C line (v) 132 kV Jiribam (PG)–Jiribam (State) S/C line (vi) 132 kV Imphal(PG) – Yurembam line (3 nos. of circuits) (vii) 33 kV Imphal (PG) – Yurembam multi circuit line (4 nos. of circuit) and (viii) 400 kV D/C transmission line from Silchar to Imphal (PG) (ix) Imphal–New Kohima –New Mariani 400kV D/C (KMTL).

With the charging of the 400 kV Silchar - Imphal D/C transmission line at its rated voltage, on 25th December, 2018 and commissioning of the 6x105+1x105 MVA 400/132kV sub-station at Yurembam (PGCIL), along with the charging of the Imphal–New Kohima – New Mariani 400kV D/C Line on 13th November 2020, which was taken up by Kohima Mariani Transmission Limited (KMTL), a subsidiary of Kalpataru Power Transmission Limited (KPTL), the state’s Available Transmission Capacity (ATC) has been enhanced to 2000 MW.

The charging of the Imphal–New Kohima –New Mariani 400kV D/C Line has also ensured stability and reliability in the entire region in the power supply system, particularly in the State of Manipur, from the 400 KV D/C ring main system comprising of Misa – Balipara –Bongaigaon – Azara – Byrnihat – Silchar - Imphal- New Kohima -Mariani - Misa.

The inter-State transmission infrastructure is operated and maintained by Power Grid Corporation of India Ltd. (PGCIL).

5.2 Intra-State transmission infrastructure:

MSPCL has constructed and is also constructing sufficient intra-State transmission & sub-transmission infrastructures all across the different regions of the State including the remotest area so as to provide quality power supply to every household.

The details of the current transmission infrastructures of the state can be seen under **Appendices II, III, IV and V:**

5.2.1 Installed Capacity of Sub-Station added during the year 2025-26:

Sl. No.	Particulars	Total Capacity(MVA)		Capacity (MVA) added during 2025-26
		As on March, 2025	As on March, 2026	
1	400/132/33 kV transformation capacity (MVA)	945	945	-
2	132/33 kV transformation capacity (MVA)	767.4	777	9.6
3	33/11 kV transformation capacity (MVA)	957.95	997.5	39.55

At present, Manipur State Power Distribution Company Limited (MSPDCL) is the only distribution utility in the State using the services of both inter-State & intra-State transmission infrastructure.

6. Regulatory Commission & Transmission Tariff:

As part of the power reform initiatives, the Joint Electricity Regulatory Commission (JERC) for Manipur and Mizoram was established with its headquarters in Aizawl, by signing a Memorandum of Agreement (MoA) among the Government of India and the States of Manipur and Mizoram on 23-07-2004 for a period of twenty (20) years under the provisions of section 83 of the Electricity Act, 2003 (36 of 2003).

Following the completion of the 20-year term of the Memorandum of Agreement (MoA) and with the consent of both the State Governments of Manipur and Mizoram, the JERC ceased to exist upon the expiry of the agreement vide order No. 47/7/2017-R&R dated 27-06-2024. In response, the Manipur State Cabinet, during its meeting on 23-12-2021, approved the creation of a State Electricity Regulatory Commission. Exercising the powers granted under sub-sections (1), (2), and (3) of Section 82 of the Electricity Act 2003 (36 of 2003), State Electricity Regulatory Commission to be known as the “Manipur Electricity Regulatory Commission” (MnERC) was formally constituted on 23-07-2024, with its headquarters at Imphal. And under section 181 of the Electricity Act 2003, MnERC adopted the regulations of JERC effective from 23-07-2024 until new regulations are framed.

The inter-State transmission/wheeling charge is fixed by CERC (Central Electricity Regulatory Commission) as per Regulations on Annual Fixed Charges/ Point of Connection Charges (POC) & sharing of losses and the intra-State transmission charge is fixed by MnERC.

Since the inception of the functioning of the Commission, filing of Tariff petition and approval of the tariff schedule by the Commission for every year is a mandatory exercise/activity of the Company and the Commission respectively.

The Aggregate Revenue Requirement (ARR) amounting to ₹123.70 Crores and the corresponding Transmission Tariff of ₹ 0.73/unit for FY 2026-27 along with the truing up of FY 2024-25 and Annual Performance Review (APR) of FY 2025-26 in respect of MSPCL was filed on 30th December, 2025.

The Tariff order for FY 2026-27 will be published after approval by the Hon'ble Commission and the order will be effective from 01st April, 2026.

7. Generation:

Manipur State Power Company Limited (MSPCL) has given new thrust to the development of generation schemes particularly in hydro sector to make up the peak hour shortages. It has been trying to take up many hydel schemes as long term measures.

7.1 Hydro Generation:

The hydro power potential of the State has been assessed as about 2000 MW. However, the potential could not be harnessed due to various reasons including paucity of fund. The 105 MW Loktak Hydroelectric Project is the only project developed so far in the State under Central Sector by NHPC Ltd. At present, the State has no generation of its own thereby incurring huge expenditure on purchase of power from other sources. The initiative shown in the following para have been taken towards the development of Hydro Power Sector in the State.

7.1.1 Development of Small and Medium range Hydro Power Projects:

The State Government has identified 29 nos. of small and medium range hydro power projects having a total capacity of 305.76 MW. Three nos. of consultants have been engaged for Survey and Investigation and formulation of Detailed Project Reports (DPR) for these projects. Final Detailed Project Reports (DPR) for 18 (eighteen) nos. are completed and 10 (twenty) nos. of Draft Detailed Projects Reports (DPR) of hydroelectric projects have been received. The final Detailed Project Reports for the remaining projects are likely to be completed by May 2026.

8. Achievement during the year 2025-26

- I. The State Load Despatch Centre (SLDC), Manipur was designated as Critical Information Infrastructure (CII) on 28th January 2025 by the National Critical Information Infrastructure Protection Centre (NCIIPC).
- II. SLDC, Manipur has implemented an Information Security Management System (ISMS) and was awarded ISO/IEC 27001:2022 certification on 28th March 2025, demonstrating its commitment to maintaining robust information security practices and ensuring the protection of its information assets.
- III. MSPCL has taken up some major 132 kV & 33 kV transmission projects under SASCI as follows:
 - i. Construction of 33/11 kV substations at 14 Locations.
 - ii. Substation upgradation and modernization.
 - iii. System strengthening of 33 kV transmission lines.
 - iv. Installation of 3 Nos. of 33kV line bays for 33/11 kV Koutruk SS and erection of 33 kV line from Iroishemba to NSU, Koutruk
 - v. Construction of 132/33 kV SS at Kamjong along with associated line.

9. Ongoing works

9.1 132 kV Transmission System:

- I. Construction of 132kV S/C Line (2nd Ckt.) on D/C towers from Leimatak PH (NHPC) to Ningthoukhong.
- II. Construction of 132 kV link transmission line for optimum evacuation of power from 400/132 kV sub-station at Thoubal to 132 kV sub-station at Moreh..
- III. Construction of 132/33 kV SS at Kamjong along with associated line.

9.2 33 kV Sub-Transmission System:

I. Under SASCI:

- i. 14 nos. of sub-stations at **Paoyi, Thuyeng, Chingai, Somdal, Akampat, Liyaikhunou, Kachai, Sanakeithel, Joujangtek, Oinam, Nampisha, Nambashi, Khongjaron and Gwakhhal.**
- ii. Substation upgradation and modernization.
- iii. Installation of 3 Nos. of 33kV line bays for 33/11 kV Koutruk SS and erection of 33 kV line from Iroishemba to NSU, Koutruk.

10. Planned Sub-Transmission System Projects:

10.1 Revamped Distribution Sector Scheme (RDSS):

- ✓ The following proposals of MSPCL were included in the DPR prepared by MSPDCL under RDSS, launched by the Government of India with the objective of improving the quality and reliability of power supply
- Installation of new 24 Nos. 2x2.5 MVA, 33/11 kV sub-stations - **₹ 221.6 Crore**
 - Construction of new 33 kV sub-transmission lines along with its associated line bays – **₹ 168.70 Crore**
 - Reconductoring of existing 33kV Transmission lines - **₹ 213.33 Crore**
 - Renovation and Modernization of 33/11 kV Substations in Manipur - **₹ 125.24 Crore**
 - Establishment of SCADA/DMS system - **₹ 21.27 Crore**
 - Replacement of 33kV XLPE Cable & Accessories associated with the 33 kV line from Power Grid Substation to Yurembem Substation- **₹ 10.73 Crore**

10.2 Under SASCI (Special Assistance to States for Capital Investment) Funding:

- ✓ After the successful issuance of LOA for Phase I & II (SASCI funding), new projects amounting to ₹ 612.06 Crore were proposed for approval.

10.3 Under ADB (Asian Development Bank) Funding:

- ✓ The following works amounting to ₹ 675.92 Crore was proposed for funding under ADB :
- Installation of 2 Nos. of 132/33 kV Substations.
 - Capacity augmentation of 5 Nos. of 132/33 kV Substations
 - R&M /Upgradation of 4 Nos. of 33/11 kV Substations.
 - Restranging of 160 kms of 132 kV transmission lines.
 - Reconductoring of about 100 kms of 33 kV transmission lines with HTLS.
 - Reconductoring of about 180 kms of 33 kV transmission lines with covered/sheathed conductor.

11. Power System Monitoring and Strengthening Schemes.

11.1 State Load Despatch Center (SLDC), Manipur:

As mandated in the Section 31 of The Electricity Act, 2003, State Government has established a State Load Despatch Center (SLDC) at Yurembam including installation of 11 nos. of RTUs at the following 132 kV sub-stations at Yurembam, Yaingangpokpi, Kongba, Kakching, Churachandpur, Hundung, Chandel, Rengpang, Jiribam, Ningthoukhong and Karong

to facilitate real time data acquisition in accordance with the Grid Standard & the Indian Electricity Grid Code 2010, optimum scheduling & dispatch of electricity within the State, monitor grid operations, exercise supervision & control over the intra-state transmission system and to keep an account of the quantity of electricity transmitted through the State grid. The SCADA of the Control Center at Yurembam enables monitoring of the parameters of each sub-station in real time allowing real time supervision & control of the sub-stations and its associated systems. It was declared for commercial operation w.e.f. 09/11/2016. It is further linked to the North Eastern Regional Load Despatch Center (NERLDC), Shillong. Numerous projects, under various Schemes, are being taken up across the State to establish fiber optics network connecting all the sub-stations at various voltage levels. This will ensure communication link, both voice as well as data, between the sub-stations enabling smooth real-time system monitoring in the State.

Under NER Wide Band Expansion project, OPGW link is now established to Equipment nodes at Yaingangpokpi, Kongba, Kakching, Chandel, Churachandpur and Ningthoukhong from main Control Center at SLDC, Yurembam and erected approximately 311.59 km length of OPGW out of total length of 385 km during this year. (*Source-Power Grid*)

The 132 kV sub-station at Yurembam is linked directly to the main control center at SLDC and data from other Substations is acquired presently through PLCC link and Fiber link as per tabulation:

Sl. No.	Name of Substation	Type of Link
1	132kV YUREMBAM	DIRECT
2	132kV KARONG	FIBRE
3	132kV YAINGANGPOKPI	FIBRE
4	132kV KONGBA	FIBRE
5	132kV KAKCHING	FIBRE
6	132kV CHANDEL	FIBRE
7	132kV CHURACHANDPUR	FIBRE
8	132kV NINGTHOUKHONG	FIBRE
9	132kV HUNDUNG	FIBRE
10	132kV JIRIBAM	FIBRE
11	132kV RENGPANG	FIBRE
12	132kV TIPAIMUKH	PLCC CUM FIBRE
13	400kV THOUBAL	FIBRE (Through 132kV link)

Also, Manipur has been stated as the first state in NER region with 100% RTU reporting status (installed RTUs) in the minutes of 19th NETeST meeting, held on 20th January, 2021 at Guwahati.

Further, Eleven (11) Nos. of 132kV sub-stations and one (1) 400kV Thoubal sub-station are voice-linked to SLDC CR/NERLDC intercom via fibre optics. The details are listed below:

Sl. No.	Name of Substation	Intercom No.	SLDC	Intercom No.
1	132kV YUREMBAM	2385006	Control room 1	2385000
2	132kV YAINGANGPOKPI	2385054	Control room 2	2385002
3	132kV KONGBA	2385055		
4	132kV KAKCHING	2385066		
5	132kV CHANDEL	2385061		
6	132kV CHURACHANDPUR	2385060		
7	132kV NINGTHOUKHONG	2385056		
8	132kV HUNDUNG	2385057		
9	132kV JIRIBAM	2385058		
10	132kV RENGPANG	2385062		

11	132kV THOUBAL	2385059		
12	400kV THOUBAL	2385066		

11.2 33 kV System Integration with SLDC Control Center:

To facilitate SCADA integration including communication link from major vital 33 kV sub-stations, MSPCL has taken up the following projects under Power System Development Fund (PSDF), Government of India. MSPCL has planned a project for system integration of 78 nos. of 33/11 kV substations with the Main Control Centre at SLDC, Yurembam with an extensive network of Fibre Optic Cable which includes laying of 1353 km of ADSS and 30 km of OPGW.

As advised by the Ministry of Power, Government of India, the project is to be implemented in different phases and the Ministry has already conveyed approval amounting to ₹ 13.37 Crore for the installation of 20 nos. of RTUs for integration with the SLDC in the first phase. The project is to be funded by PSDF (100 % Grant). The work was awarded to M/s GE T&D India Limited. ₹11.15 Crore has already been disbursed from PSDF in three installments. Requisition for the final installment of ₹ 2.22 Crore was made on Feb 16,2026. The installment amount is yet to be disbursed.

11.3 Scheduling Accounting Metering and Settlement of Transaction (SAMAST)

Manipur has implemented SAMAST scheme under the funding of PSDF, through common tender and LOA issued by NERPC. Following its implementation, it covers a total of 75 substations and 475 metering points, facilitating systematic energy accounting, real time data acquisition, meter data validation, transmission losses accounting, Open Access approvals, Deviation Settlements etc.

The project covers SLDC website consisting of Web Interface for the Stakeholders for Scheduling, Energy Accounting/ analysis, Losses etc. to feed data as well as generation of reports.

Till date, ₹ 11.59 Crore out of ₹ 12.96 Crore has already been disbursed. Provisional Go-Live was conducted on June 30, 2025. M/S Genus Power Infrastructures Limited and M/S Pricewaterhouse Coopers Pvt. Ltd. have already submitted the pending bill. Requisition for the remaining ₹ 1.37 Crore has already been submitted on Feb 16, 2026. Physical and Financial closure of the project will be completed after the final instalment grant is disbursed and utilized.

11.4 Establishment of SOC and NOC at Manipur State Load Dispatch Center:

Proposal for Establishment of SOC (Security Operation Center) and NOC (Network Operation Center) at Manipur State Load Dispatch Center benchmarked at ₹ 19.44 Crore was submitted to NLDC, nodal agency of PSDF and approval for funding under PSDF is awaited.

12. Cyber Security and Critical Infrastructure Protection

12.1 Critical Information Infrastructure (CII) Designation:

The State Load Dispatch Centre (SLDC), Manipur was designated as Critical Information Infrastructure (CII) on 28th January 2025 by the National Critical Information Infrastructure Protection Centre (NCIIPC). Following this designation, SLDC, Manipur has undertaken several initiatives to strengthen the cyber security posture of its Operational Technology (OT) and information systems.

SLDC, Manipur has developed and implemented a Cyber Crisis Management Plan (CCMP), which has been approved by CERT-In and the Board of Directors (BoDs) of MSPCL,

to address cyber security incidents and ensure continuity of operations. The plan includes the following key components:

- ✓ Identification of potential cyber-attack scenarios, possible targets, and assessment of their potential operational impact.
- ✓ Establishment of a Cyber Crisis Management Team to effectively respond to and manage cyber security incidents.

12.2 Information Security Management System (ISO/IEC 27001:2022):

SLDC, Manipur has implemented an Information Security Management System (ISMS) and was awarded ISO/IEC 27001:2022 certification on 28th March 2025, demonstrating its commitment to maintaining robust information security practices and ensuring the protection of its information assets.

As part of its cyber security framework, SLDC, Manipur has identified Critical Business Processes/Functions and their associated information assets. This process enables the organization, in coordination with relevant stakeholders, to implement appropriate safeguards and resilience measures to ensure secure and uninterrupted operations and to mitigate risks arising from cyber threats. To further strengthen security preparedness, Vulnerability Assessment and Penetration Testing (VAPT) of the Operational Technology (OT) systems is conducted annually through CERT-In empanelled organizations.

In addition, as part of its cyber threat intelligence and preventive security measures, SLDC, Manipur has been onboarded with the Cyber Swachhta Kendra. Alerts and advisories issued through this platform are regularly monitored, and necessary preventive actions are undertaken from time to time.

These initiatives collectively contribute to strengthening the cyber resilience, security preparedness, and operational reliability of SLDC, Manipur.

13. Leasing of Fiber Optic Network for commercial purpose.

MSPCL has 14 nos. optical fiber links with 12 pairs each. Of these some fiber links are available for commercial purposes. The details of the fiber link are given below:

Sl. No.	Location A	Location B	Route Length (in Km)	Number of fiber pairs
1	Imphal (Yurembam)	Yaingangpokpi	44.94	12
2	Yaingangpokpi	Kongba	35.20	12
3	Kongba	Thoubal	23.40	12
4	Thoubal	Kakching	41.30	12
5	Kakching	Moreh	49.50	12
6	Churachanpur	Ningthoukhong	26.52	12
7	Ningthoukhong	Loktak NHPC	11.19	12
8	Kakching	Churachanpur	41.35	12
9	Yaingangpokpi	Hundung	29.21	12
10	Kakching	Chandel	17.45	12
11	Rengpang	Tamenglong	21.42	12
12	Loktak NHPC	Rengpang	42.03	12
13	Imphal (Yurembam)	Karong	64.20	12
14	Jiribam (PG)	Jiribam (State)	0.135	12

Thoubal- Moreh link about route length 72kms is upcoming

MSPCL has leased out fiber optic network to network providers to provide reliable, high quality and cost-effective communication system in Manipur and subsequently, this will earn additional revenue. The details are given below:

1. AIRTEL

Sl.No.	OPGW link	Route Length (in kms)	No. of pair of fibres
1	Thoubal-Kakching	41.186	2
2	Yurembam (Imphal) - Yaingangpokpi	43.74	2
3	Yaingangpokpi - Hundung	29.34	1
4	Kongba - Thoubal	23.439	1
5	Kakching - Moreh	49.533	2
6	Ningthoukhong - Loktak	11.579	2
7	Loktak - Rengpang	42.017	2
8	Yurembam (Imphal)-Karong	64.2	2
Total		305.034	14

2. POWERTEL

Sl.No.	OPGW link	Route Length (in kms)	No. of pair of fibres
1	Thoubal-Kakching	41.195	1
2	Yurembam (Imphal) - Yaingangpokpi	43.81	2
3	Yaingangpokpi - Hundung	29.36	1
4	Kongba - Thoubal	23.45	1
5	Yaingangpokpi - Kongba	35.2	1
6	Yurembam (Imphal)-Karong	64.2	2
Total		237.215	8

3. BSNL

Sl.No.	OPGW link	Route Length (in kms)	No. of pair of fibres
1	Thoubal-Kakching	41.0392	1
2	Yurembam (Imphal) - Yaingangpokpi	43.55	1
3	Yaingangpokpi - Hundung	29.325	1
4	Kongba - Thoubal	23.32	1
5	Ningthoukhong – Loktak (NHPC)	11.19	1
6	Kakching - Churachandpur	42.955	1
7	Kakching-Moreh	49.523	1
8	Kakching-Chandel	17.45	1
9	Rengpang-Tamenglong	21.42	1
10	Yurembam (Imphal)-Karong (Upto Gamphazol)	31.583	1
Total		311.3552	10

4. RAILTEL

Sl.No.	OPGW link	Route Length (in kms)	No. of pair of fibres
1	Yaingangpokpi - Hundung	29.271	1
2	Kakching - Moreh	49.533	1
3	Ningthoukhong - Loktak	11.162	1
4	Loktak - Rengpang	42.254	1
Total		132.22	4

The line charges (per km per annum) and co-location charges (telecom rack – 10 sq. ft., per month per location) applicable for leasing of OPGW fibres, with annual escalation 5% compounded annually, are as follows:

Sl. No.	Network Provider	Rate (per pair per km per annum exclusive of taxes)	Co- location rate (per month per location exclusive of taxes)	Lease Period	Date of Agreement
1	POWERTEL	₹ 10,200/- compounded annually @ 5%	₹ 5,000/- compounded annually @ 5%	10 yrs	04/04/2022
2	Bharti AIRTEL	₹ 12,000/- fixed for 5 Yrs	-	5 yrs	24/04/2023
3	RailTel	₹ 10,710/- compounded annually @ 5%	₹ 5,250/- compounded annually @ 5%	2 yrs	28/07/2023
4	BSNL	₹ 10,710/- compounded annually @ 5%	₹ 5,513/- compounded annually @ 5%	5 yrs	19/03/2024

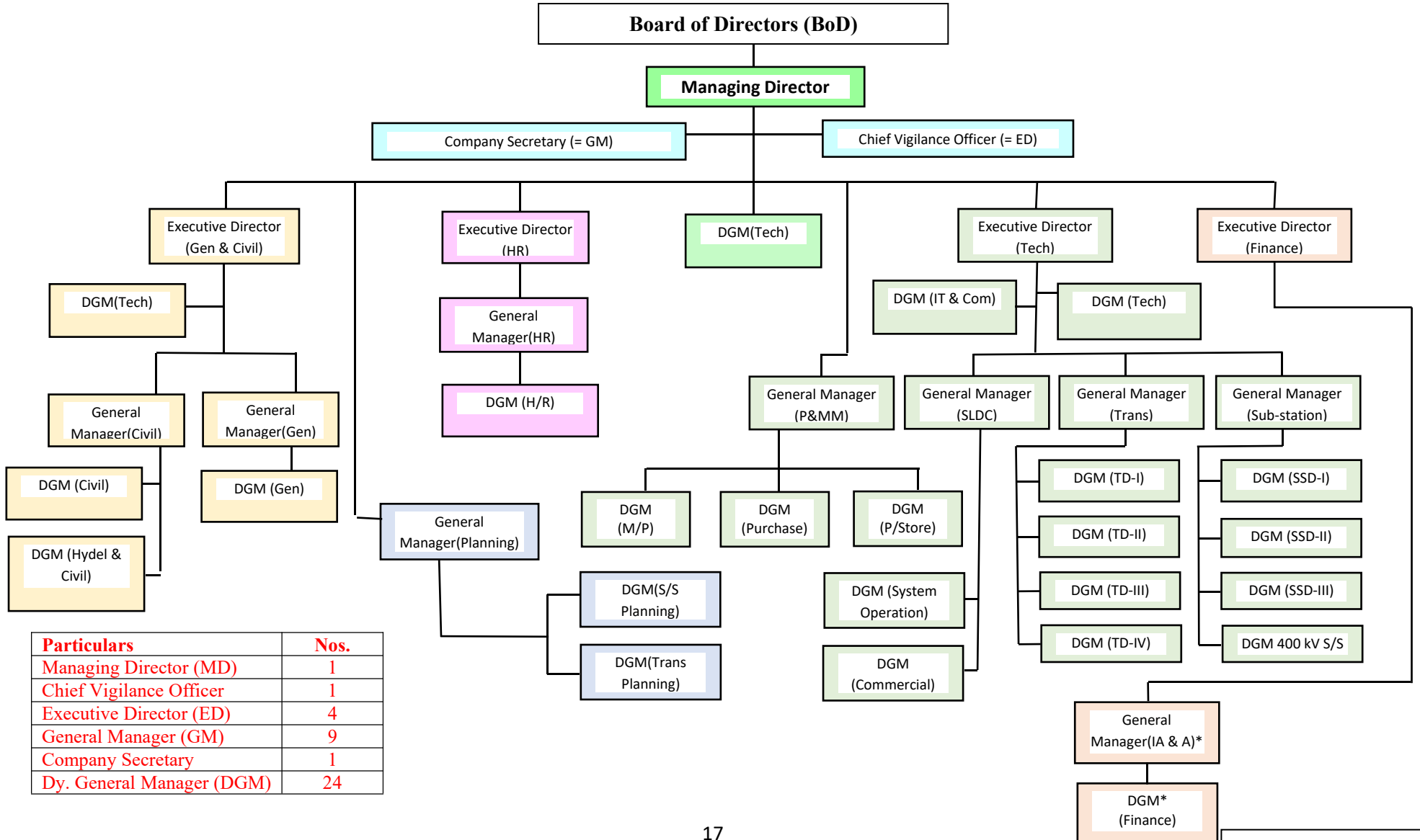
The Company is also considering in leasing out remaining dark pairs of OPGW to other prospective service providers who are also approaching the Company for the same.

14. Conclusion:

The existing infrastructure and the ongoing/proposed schemes will ensure that every household in the State will get the benefit of reliable & quality power supply for 24x7 and even the remotest area does not suffer due to lack of grid connectivity, achieving the objective of the State to provide electricity to all households.

Appendix I – Organisational Chart

ORGANIZATION CHART
MANIPUR STATE POWER COMPANY LIMITED



Note: The new organizational chart is due for approval at the next BoD meeting.

Appendix II - Details of 33/11 KV Sub-stations:

Sl. No.	Name of Substation	Transformer Capacity (MVA)	Total Capacity (MVA)
1	Airport	2x2.5	5
2	Andro	2x3.15	6.3
3	Bishnupur (Khwairakpan)	3x3.15	9.45
4	Chakpikarong	2x1	2
5	Chandel	2x5	10
6	Chingarel	2x5	10
7	Churachandpur	3x5	15
8	Civil Secretariate	2 x 5	10
9	Elangkhangpokpi	2x5	10
10	Gamphajol Saparmeina	2x2.5	5
11	Gelnel	2x2.5	5
12	Gumnom	2x2.5	5
13	Heirok	2x5	10
14	Henglep	2x1	2
15	Hiyangthang	2x3.15	6.3
16	Hundung	1x3.15 + 1x1	4.15
17	Ibudhou marjing	2x5	10
18	Imphal P/H	3x5	15
19	Iroisemba	2x10	20
20	Jessami	2x2.5	5
21	Jiribam	4x5	20
22	JNIMS	2x5	10
23	Joupi	2x1	2
24	Kakching	2x5	10
25	Kakwa	2x5	10
26	Kamjong	1x3.15+1x1	4.15
27	Kangla	2x5	10
28	Kangpokpi	3x3.15	9.45
29	Karong(Senapati)	3x5	15
30	Kasom Khullen	2x2.5	5
31	Keithelmanbi (New)	2x5	10
32	Khongjom	2x5	10
33	Khoupum	2 x 5 + 2 x 2.5	15
34	KhumanLampak	3x10	30
35	Kongba	2x10	20
36	Kwakta	2x3.15	6.3
37	Lakhamai	2x1	2
38	Lamphel	2x10	20
39	Lamphel (NIT)	2 x 10	20

40	Leimakhong	$1 \times 3 + 2 \times 5$	13
41	Leimapokpam	1×5	5
42	Litan	2×3.15	6.3
43	Machi	2×1	2
44	Mahadeva	$1 \times 3.15 + 2 \times 3.15$	9.45
45	Mantripukhri	2×5	10
46	Mao	2×5	10
47	Maram	2×3.15	6.3
48	Mayang Imphal	2×3.15	6.3
49	Mayang Langjing	1×3.15	3.15
50	Mayangkhang	2×5	10
51	Moirang	2×5	10
52	Moirangkhouou	2×5	10
53	Mongsangei	2×10	20
54	Moreh (new)	2×5	10
55	Moreh (old)	2×5	10
56	Nambol	2×5	10
57	Namrei	$1 \times 3.15 + 1 \times 1$	4.15
58	Napetpalli (Lamlai)	2×5	10
59	New Chayang	2×3.15	6.3
60	New Lamka	2×5	10
61	Nilakuthi	2×10	20
62	Ningthoukhong	$2 \times 5 + 1 \times 3.15$	13.15
63	None	1×3.15	3.15
64	Nungbi Khullen	2×5	10
65	Oil Depot	2×2.5	5
66	Oinamlong	2×2.5	5
67	Parbung	1×3.15	3.15
68	Pherjawl	2×1	2
69	Phungyar	2×2.5	5
70	Pisum (GIS)	2×10	20
71	Porompat	2×5	10
72	Rengpang	1×5	5
73	RIMS	2×5	10
74	Sagolmang	2×3.15	6.3
75	Saikul	2×3.15	6.3
76	Sangaikot	2×1	2
77	Sangaipat	2×10	20
78	Sangaiprou	2×10	20
79	Sanjenbam	2×5	10
80	Sekmai	2×5	10
81	Sekmaijin	2×5	10
82	Shivapurikhal	1×3.15	3.15
83	Singhat	1×3.15	3.15
84	Sinjawl	2×1	2

85	Sugnu	2x5	10
86	Tadubi	2x3.15	6.3
87	Takyel	2 x 5	10
88	Tamei	1x3.15	3.15
89	Tamenglong	1x3.15 + 1x5	8.15
90	Tengnoupal	1x3.15+1x1	4.15
91	Thangal	2 x 3.15	6.3
92	Thanlon	2x1+1x3.15	5.15
93	Thinkew	2x1	2
94	Thoubal	2x5	10
95	Thoubal (new)	2x10	20
96	Thoubal Leishangthem	2x5	10
97	Tipaimukh	2x5	10
98	Tolloi	1x3.15 + 1x1	4.15
99	Top Khongnangkhang	2x5	10
100	Tousem	1x1	1
101	Tuliphai	2x3.15	6.3
102	UnkhrulKhunjao	2x5	10
103	Urup (Langdum)	1x3.15	3.15
104	Usoipokpi	1x5+1x10	5
105	Wangjing	2x3.15 + 1x5	11.3
106	Wangjing (Moirang Palli)	2x5	10
107	Wangoi	2x5	10
108	Wangoo	1x1	1
109	Willong	2x2.5	5
110	Yaingangpokpi	2x5	10
111	Yairipok	2x5	10
112	Yurembam	1x5+1x10	15
Total			997.5

Appendix III -Details of 33KV Lines

Sl. No.	Name of line	S/C or D/C	Voltage level kV	Line length (Km.)
1	Mongsangei – Kongba	D/C	33	13.81
2	LILO at Sangaipat	D/C	33	3.20
3	LILO at JNIMS	D/C	33	2.00
4	Yurembam - Mongsangei	D/C	33	8.14
5	Yurembam – Iroisemba (D/C)	D/C	33	4.35
6	Iroisemba-Khuman Lampak	D/C	33	10.43
7	Sinam Chingin – Lamphel	D/C	33	3.50
8	Khuman Lampak – Kongba (D/C)	D/C	33	14.26
9	LILO at Tuilaphai from Churachanpur-Thinkew	D/C	33	0.68
10	LILO at Oildepot from Yurembam-Mayang Imphal	D/C	33	2.00

11	LILO at Pishum(GIS)from Mongsangei -Kakwa	D/C	33	0.34
12	Thoubal-Thoubal	D/C	33	6.00
13	LILO at Chingarel from Napetpalli-Khuman Lampak	D/C	33	4.00
14	Iroisemba - Leimakhong D/C	D/C	33	18.00
15	LILO at Ibudhou Marjing from Khuman Lampak- Nilakuthi	D/C	33	10.00
16	LILO Mantripukhri from Khuman Lampak- Nilakuthi	D/C	33	1.00
17	PGCIL - Yurembam Multi Circuit	M/C	33	1.20
18	Yurembam – Mayang Imphal	S/C	33	23.80
19	Khuman Lampak – Imphal P/H	S/C	33	3.50
20	Khuman Lampak - Kongba	S/C	33	11.00
21	Moirang – Moirang Khunou	S/C	33	6.50
22	Thoubal-Langdum	S/C	33	9.64
23	Kongba-Langdum	S/C	33	5.36
24	Ningthoukhong – Moirang	S/C	33	10.50
25	Moirang - Churachandpur	S/C	33	16.75
26	Ningthoukhong – Bishnupur	S/C	33	8.80
27	Bishnupur – Nambol	S/C	33	7.00
28	Nambol to tapping at Malom	S/C	33	3.00
29	Pole Section of Airport line	S/C	33	4.50
30	Churachandpur - New Lamka	S/C	33	12.00
31	New Lamka - Singhat	S/C	33	26.00
32	LILO at Kangla on Khuman-Imphal (P/H)(Keishampat)	S/C	33	0.10
33	Churachandpur-Thinkew	S/C	33	38.00
34	Mongsangei to Kakwa	S/C	33	5.00
35	Tapping (pole section) at Sangaiprou on Yurembam-Monsangei line	S/C	33	0.20
36	Thinkew- Thanlon	S/C	33	75.00
37	Thanlon - Sinjawl	S/C	33	50.00
38	Thinkew -Henglep	S/C	33	25.00
39	Sanjenbam to Porompat	S/C	33	3.59
40	Mayang Imphal to Wangoi	S/C	33	10.00
41	Moirang – Kwakta	S/C	33	6.43
42	Mongsangei-Hiyangthang	S/C	33	4.88
43	Nambol - Leimapokpam	S/C	33	6.72
44	Thoubal-Usoipokpi	S/C	33	5.90
45	Langdum-Andro	S/C	33	5.61
46	Porompat-Top Khongnangkhong	S/C	33	3.15
47	Iroisemba-Lamphel (NIT)	S/C	33	4.95
48	Yurembam-Takyel	S/C	33	4.00
49	Thanlon (New)-Thanlon(Old)	S/C	33	1.00
50	Lamphel (NIT)-RIMS	S/C	33	1.00
51	LILO at Civil Secretariate	S/C	33	0.23
52	Yurembam – Leimakhong	S/C	33	20.00

53	Napetpalli - Khuman Lampak	S/C	33	16.00
54	Khuman Lampak – Nilakuthi	S/C	33	8.50
55	Yaingangpokpi – Napetpalli	S/C	33	12.40
56	Jiribam – Rengpang	S/C	33	75.00
57	Rengpang – Khoupum	S/C	33	25.00
58	Rengpang – Tamenglong	S/C	33	45.00
59	Yurembam - Noney	S/C	33	34.50
60	Jiribam -Shivapurikhal	S/C	33	43.00
61	Tamenglong-Tousem	S/C	33	42.00
62	LILO at Oinamlong from Jiribam - Rengpang	S/C	33	25.00
63	Napetpalli to Sanjenbam	S/C	33	7.47
64	LILO at Keithelmanbi from Yurembam-Noney	S/C	33	6.60
65	Napetpalli-Saikul	S/C	33	35.00
66	Khoupum-Thangal	S/C	33	49.00
67	LILO Sagolmang from Napetpalli-Saikul	S/C	33	6.00
68	Kakching – Mayang Imphal	S/C	33	19.00
69	Kakching – New Chayang	S/C	33	18.40
70	Kakching – Tengenupal	S/C	33	27.00
71	Wangjing-Kakching	S/C	33	15.00
72	Thoubal -Wangjing	S/C	33	7.00
73	Tengenupal - Moreh	S/C	33	35.00
74	LILO Sekmajin	S/C	33	4.00
75	LILO Chakpikarong	S/C	33	4.00
76	Thoubal - Thoubal Leishangthem	S/C	33	20.00
77	LILO at Khongjom from Kakching -Wangjing	S/C	33	5.00
78	LILO Sugnu	S/C	33	3.00
79	LILO at Yairipok on Thoubal - Kasom Khullen	S/C	33	3.00
80	Wangjing- Moirang Palli	S/C	33	10.00
81	Wangjing-Heirok	S/C	33	8.00
82	Thoubal -Kasom Khullen	S/C	33	41.00
83	(Moreh (old) - Moreh (new)	S/C	33	5.00
84	Leimakhong – Nilakuthi	S/C	33	9.50
85	Leimakhong – Kangpokpi	S/C	33	35.00
86	Yaingangpokpi - Litan	S/C	33	12.00
87	Litan - Hundung	S/C	34	20.00
88	Hundung – Kamjong	S/C	33	56.00
89	Hundung – Tolloi	S/C	33	28.00
90	Karong – Maram	S/C	33	20.00
91	Maram – Tadubi	S/C	33	20.00
92	Kangpokpi – Karong	S/C	33	18.00
93	Tolloi –Namarei	S/C	33	43.00
94	Maram- Lakhamai	S/C	33	40.00
95	Kangpokpi – Tamei	S/C	33	50.00
96	Namarei – Jessami	S/C	33	50.00
97	Maram – Willong	S/C	33	37.00

98	LI-LO at Ukhrul Khunajo	S/C	33	6.00
99	LILO at Gamphajol (Kangpokpi-Leimakhong)	S/C	33	2.50
100	LILO at Sekmai (Kangpokpi – Leimakhong)	S/C	33	5.00
101	Hundung – Phungyar	S/C	33	42.00
102	LI-LO at Gelnel (Kangpokpi – Tamei)	S/C	33	6.00
103	Shajouba(Tadubi) – Mao	S/C	33	10.00
104	Hundung – Nungbi Khullen	S/C	33	45.00
105	LI-LO at Mayangkhong (Karong – Kangpokpi)	S/C	33	4.00
106	LI-LO at Gumnom (Hundung – Kamjong)	S/C	33	7.00
Total				1742.89

Appendix IV - Details of 400 kV & 132 KV Lines

No.	Name of line	S/C or D/C	Voltage level (kV)	Line length (km.)
1	Yurembam(PGCIL)-Thoubal	D/C	400	45.11
2	Leimatak to Ningthoukhong	S/C	132	10.500
3	Yurembam (PGCIL) to Ningthoukhong (I)	S/C	132	27.500
4	LILO at Tipaimukh on Jiribam (PG) - Aizawl (PG)	S/C	132	5.000
5	Ningthoukhong to Churachandpur	D/C	132	23.060
6	Churachandpur to Thanlon	S/C	132	66.035
7	Thoubal (400kV) to Thoubal (132kV)	S/C	132	1.600
8	Imphal to Imphal II & III	S/C	132	1.200
9	Thoubal to Kakching	S/C	132	40.500
10	Kongba to Thoubal	D/C	132	22.400
11	Yaingangpokpi to Kongba	D/C	132	33.316
12	Yurembam (PG) to Ningthoukhong (II & III)	D/C	132	32.520
13	Yurembam to Yaingangpokpi (I)	D/C	132	41.36
14	Yurembam to Yaingangpokpi (II)	S/C	132	46.990
15	Leimatak to Jiribam	S/C	132	82.400
16	LILO at Rengpang	S/C	132	4.800
17	Jiribam (PG) – Jiribam (State)	S/C	132	0.96
18	Rengpang to Tamenglong	S/C	132	21.422
19	Kakching to Moreh	S/C	132	45.66
20	Kakching to Ccpur	D/C	132	18.929
21	Kakching to Chandel	S/C	132	16.065
22	LILO at Elangkhongpokpi	S/C	132	5.9
23	Yurembam-Karong	S/C	132	50
24	Karong - Mao	S/C	132	41.375
25	Yaingangpokpi-Hundung	S/C	132	26.81
26	LI-LO at Gamphazol	S/C	132	1.45

Note:

- i. Total length of 400 kV Transmission line : **45.11 km**
- ii. Total length of 132kV Transmission line : **667.752 km**

Appendix V - Details of 400/132 kV & 132/33 KV Sub-stations:

Sl. No.	Name of Substation	Voltage Levels	Capacity (MVA)	Total Capacity (MVA)
1	Thoubal	400 kV	3x105	315
2	Yurembam (PGCIL)	400 kV	6x105	630
2	Chandel	132kV	2x12.5	25
3	Churachandpur	132kV	2x20	40
4	Elangkhangpokpi	132kV	2x20	40
5	Hundung	132kV	3x12.5	37.5
6	Jiribam	132kV	3x20	60
7	Kakching	132kV	2x20	40
8	Karong	132kV	2x20	40
9	Kongba	132kV	3x20	60
10	Moreh	132kV	2x12.5	25
11	Ningthoukhong	132kV	3x20	60
12	Rengpang	132kV	2x12.5	25
13	Thanlon	132kV	2x12.5	25
14	Thoubal	132kV	2x20	40
15	Tipaimukh	132kV	2x12.5	25
16	Yaingangpokpi	132kV	2x20	40
17	Yurembam	132kV	3x31.5	94.5
18	Yurembam (PGCIL)	132 kV	2x50	100

Note:

1. Total Capacity of 400/132 kV Substation: **945 MVA**
2. Total Capacity of 132/33 kV Substations: **777 MVA**

